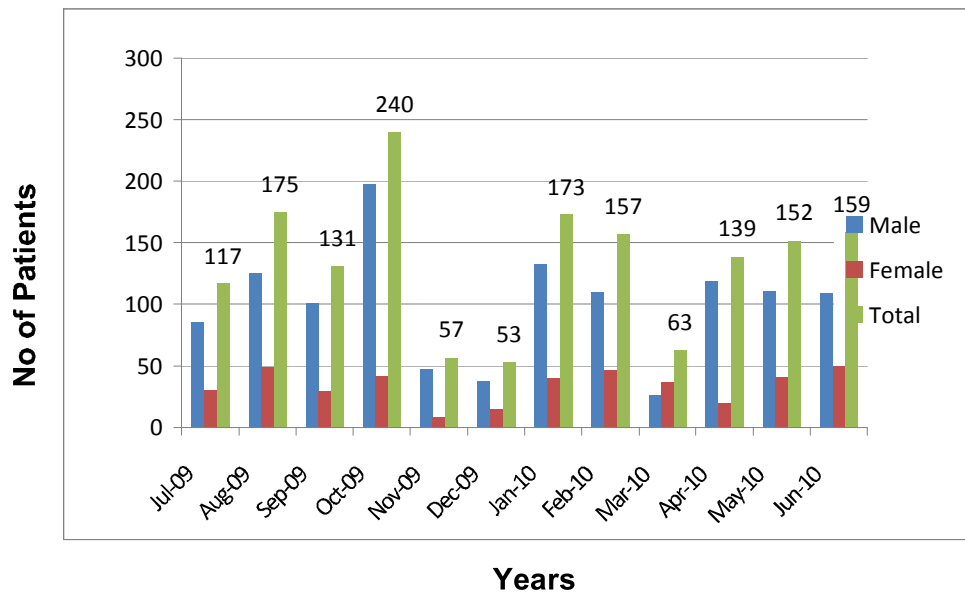


Karachi Institute of Heart Diseases
Summary of Angiography
July 2009 To June 2010

S.No	Month & Year	Male	Female	Total
1	Jul-09	86	31	117
2	Aug-09	126	49	175
3	Sep-09	101	30	131
4	Oct-09	198	42	240
5	Nov-09	48	9	57
6	Dec-09	38	15	53
7	Jan-10	133	40	173
8	Feb-10	110	47	157
9	Mar-10	26	37	63
10	Apr-10	119	20	139
11	May-10	111	41	152
12	Jun-10	109	50	159
Total		1205	411	1616

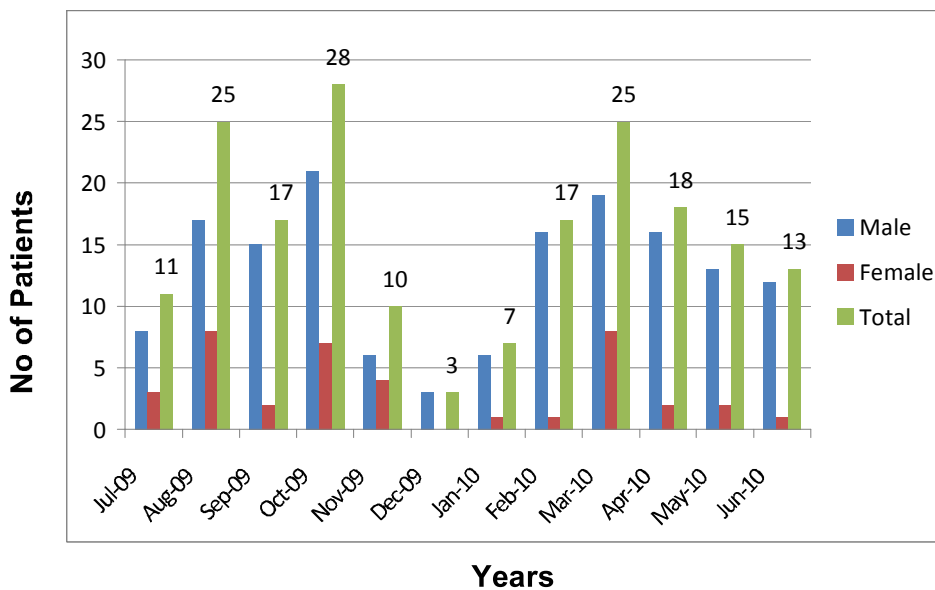
Summary Of Angiography
1 July 2009 - 30 June 2010



Karachi Institute of Heart Diseases
Summary of Angioplasty
July 2009 To June 2010

S.No	Month & Year	Male	Female	Total
1	Jul-09	8	3	11
2	Aug-09	17	8	25
3	Sep-09	15	2	17
4	Oct-09	21	7	28
5	Nov-09	6	4	10
6	Dec-09	3	0	3
7	Jan-10	6	1	7
8	Feb-10	16	1	17
9	Mar-10	19	8	25
10	Apr-10	16	2	18
11	May-10	13	2	15
12	Jun-10	12	1	13
Total		152	39	189

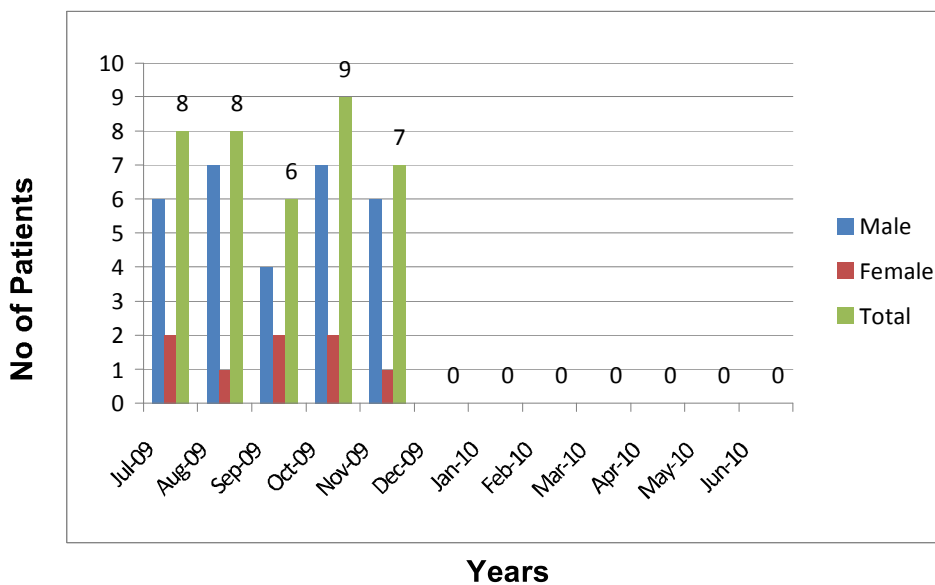
Summay Angioplasty
1 July 2009 - 30June 2010



Karachi Institute of Heart Diseases
Summary of Bypass
July 2009 To June 2010

S.No	Month & Year	Male	Female	Total
1	Jul-09	6	2	8
2	Aug-09	7	1	8
3	Sep-09	4	2	6
4	Oct-09	7	2	9
5	Nov-09	6	1	7
6	Dec-09	0	0	0
7	Jan-10	0	0	0
8	Feb-10	0	0	0
9	Mar-10	0	0	0
10	Apr-10	0	0	0
11	May-10	0	0	0
12	Jun-10	0	0	0
Total		30	8	38

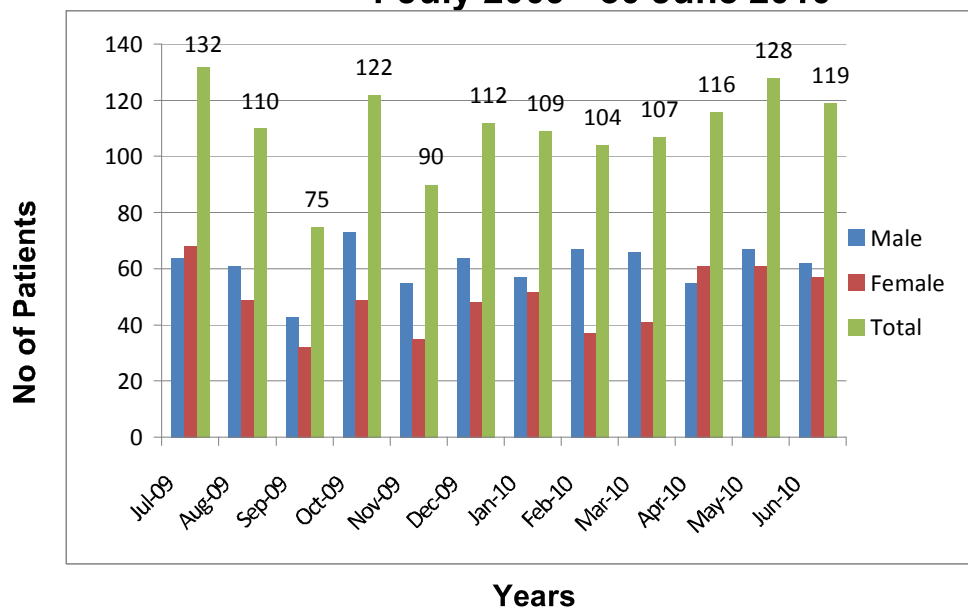
Summary Of Bypass
1 July 2009 - 30 June 2010



Karachi Institute of Heart Diseases
Summary of Thallium
July 2009 To June 2010

S.No	Month & Year	Male	Female	Total
1	Jul-09	64	68	132
2	Aug-09	61	49	110
3	Sep-09	43	32	75
4	Oct-09	73	49	122
5	Nov-09	55	35	90
6	Dec-09	64	48	112
7	Jan-10	57	52	109
8	Feb-10	67	37	104
9	Mar-10	66	41	107
10	Apr-10	55	61	116
11	May-10	67	61	128
12	Jun-10	62	57	119
Total		734	590	1324

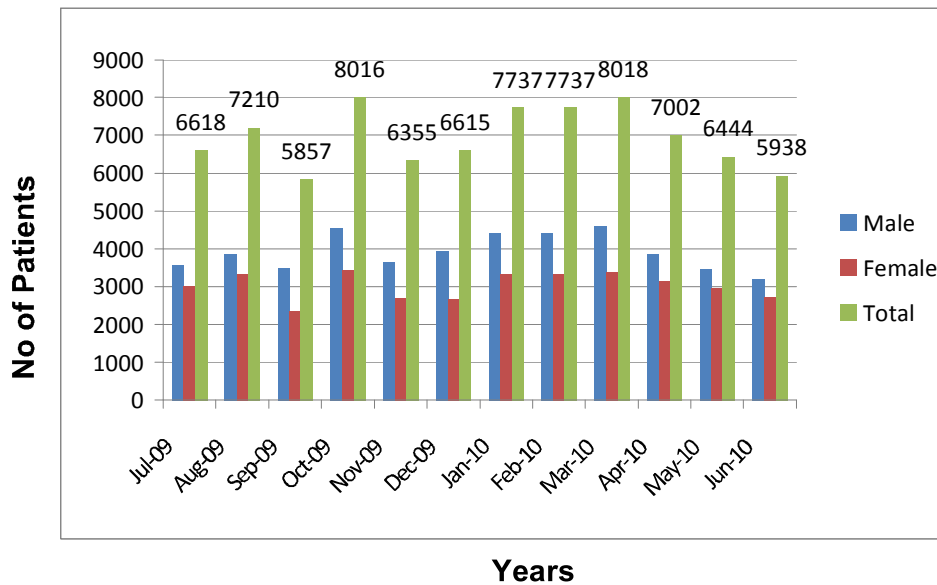
Summary Of Thallium
1 July 2009 - 30 June 2010



Karachi Institute of Heart Diseases
Summary of OPD
July 2009 To June 2010

S.No	Month & Year	Male	Female	Total
1	Jul-09	3589	3029	6618
2	Aug-09	3873	3337	7210
3	Sep-09	3490	2367	5857
4	Oct-09	4571	3445	8016
5	Nov-09	3653	2702	6355
6	Dec-09	3936	2679	6615
7	Jan-10	4414	3323	7737
8	Feb-10	4412	3325	7737
9	Mar-10	4620	3398	8018
10	Apr-10	3862	3140	7002
11	May-10	3466	2978	6444
12	Jun-10	3212	2726	5938
Total		47098	36449	83547

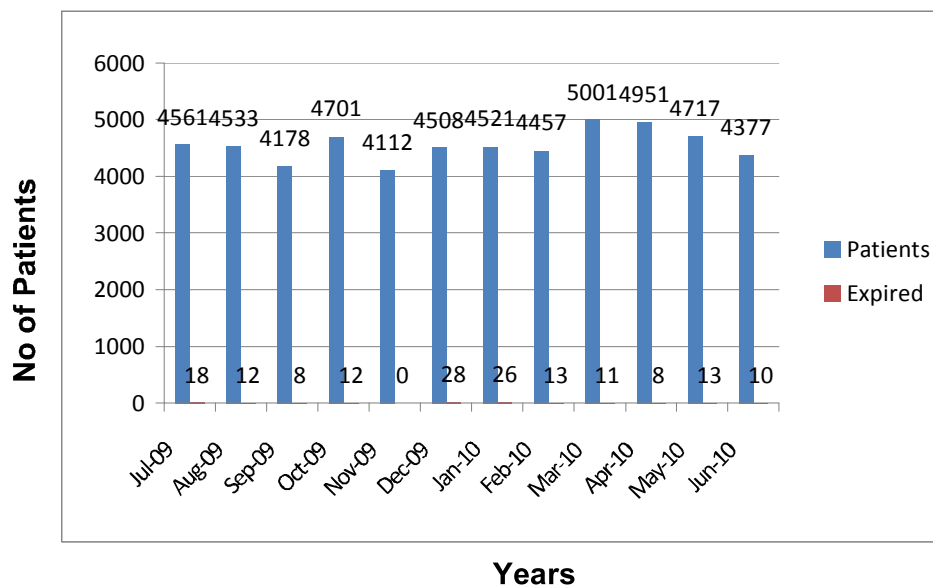
Summary Of O.P.D
1 July 2009 - 30 June 2010



Karachi Institute of Heart Diseases
Summary of ER
July 2009 To June 2010

S.No	Month & Year	Patients	Expired	B.D	% of Exp
1	Jul-09	4561	18	39	0.3947
2	Aug-09	4533	12	40	0.2647
3	Sep-09	4178	8	45	0.1915
4	Oct-09	4701	12	38	0.2553
5	Nov-09	4112	0	51	0
6	Dec-09	4508	28	64	0.6211
7	Jan-10	4521	26	65	0.5751
8	Feb-10	4457	13	52	0.2917
9	Mar-10	5001	11	32	0.22
10	Apr-10	4951	8	31	0.1616
11	May-10	4717	13	38	0.2756
12	Jun-10	4377	10	42	0.2285
Total		54617	159	537	0.3

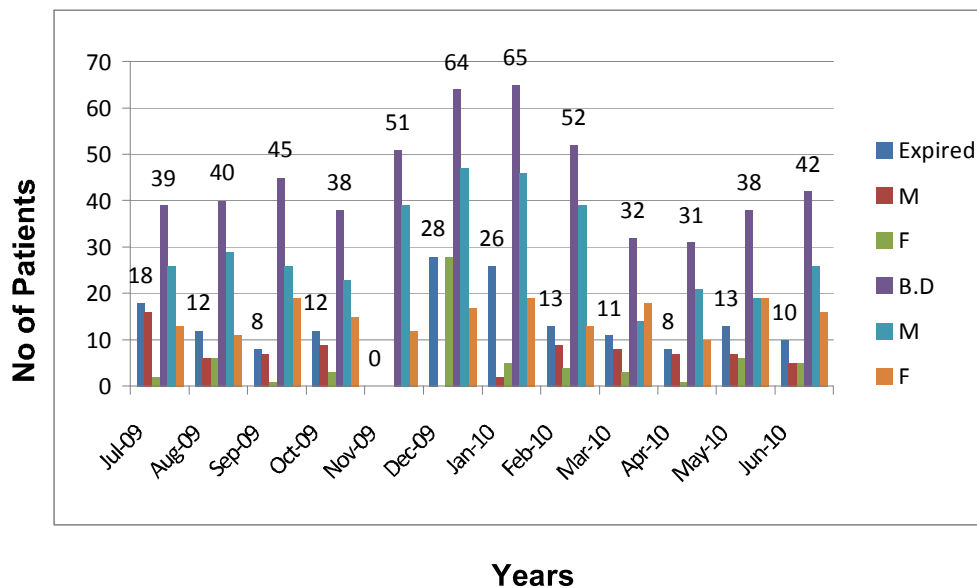
Summary Of E.R
1 July 2009 - 30 June 2010



Karachi Institute of Heart Diseases
Summary of ER (Expire & BD)
July 2009 To June 2010

S.No	Month & Year	Expired	M	F	B.D	M	F
1	Jul-09	18	16	2	39	26	13
2	Aug-09	12	6	6	40	29	11
3	Sep-09	8	7	1	45	26	19
4	Oct-09	12	9	3	38	23	15
5	Nov-09	0	0	0	51	39	12
6	Dec-09	28	0	28	64	47	17
7	Jan-10	26	2	5	65	46	19
8	Feb-10	13	9	4	52	39	13
9	Mar-10	11	8	3	32	14	18
10	Apr-10	8	7	1	31	21	10
11	May-10	13	7	6	38	19	19
12	Jun-10	10	5	5	42	26	16
Total		159	76	64	537	355	182

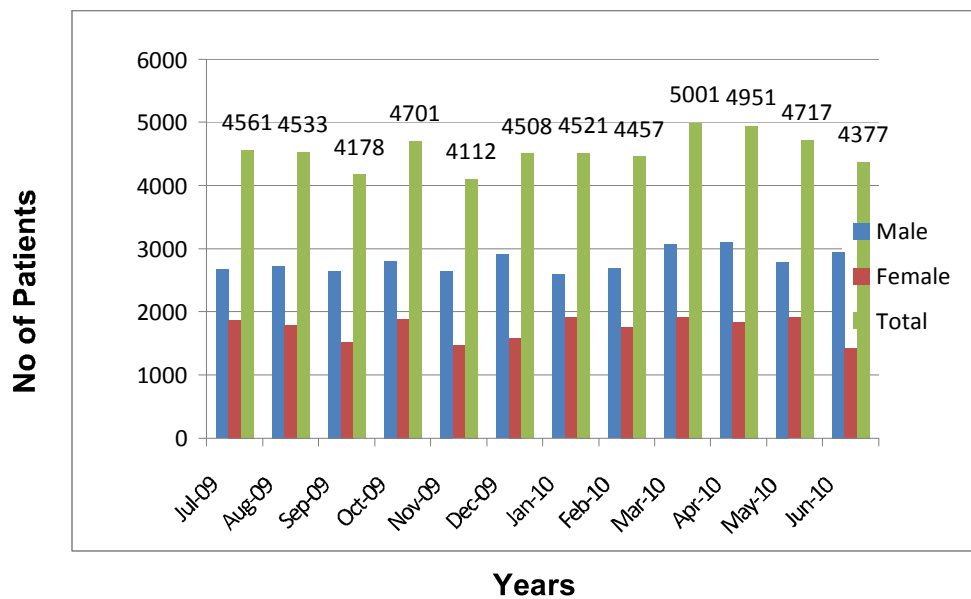
Summary Of E.R(Expire & BD)
1 July 2009 - 30 June 2010



Karachi Institute of Heart Diseases
Summary of ER
July 2009 To June 2010

S.No	Month & Year	Male	Female	Total
1	Jul-09	2680	1881	4561
2	Aug-09	2732	1801	4533
3	Sep-09	2652	1526	4178
4	Oct-09	2814	1887	4701
5	Nov-09	2644	1468	4112
6	Dec-09	2911	1597	4508
7	Jan-10	2600	1921	4521
8	Feb-10	2689	1768	4457
9	Mar-10	3073	1928	5001
10	Apr-10	3101	1850	4951
11	May-10	2794	1923	4717
12	Jun-10	2947	1430	4377
Total		33637	20980	54617

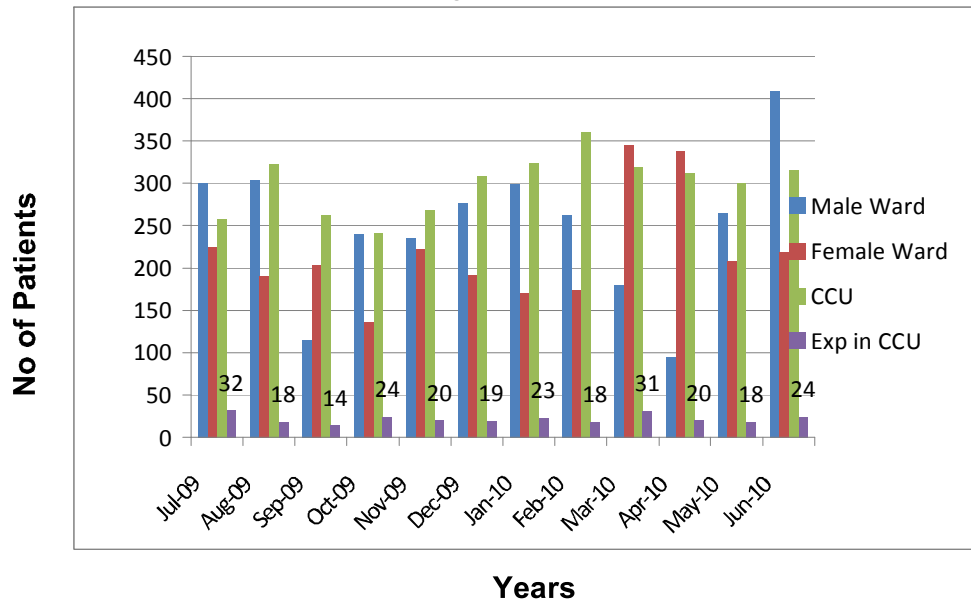
Summary Of E.R
1 July 2009 - 30 June 2010



Karachi Institute of Heart Diseases
Summary of Admission
July 2009 To June 2010

S.No	Month & Year	Male Ward	Female Ward	CCU	Exp in CCU
1	Jul-09	300	224	258	32
2	Aug-09	304	190	323	18
3	Sep-09	115	204	262	14
4	Oct-09	240	136	241	24
5	Nov-09	235	222	269	20
6	Dec-09	277	192	308	19
7	Jan-10	299	170	324	23
8	Feb-10	262	174	360	18
9	Mar-10	180	345	319	31
10	Apr-10	94	338	312	20
11	May-10	264	208	300	18
12	Jun-10	410	218	316	24
Total		2980	2621	3592	261

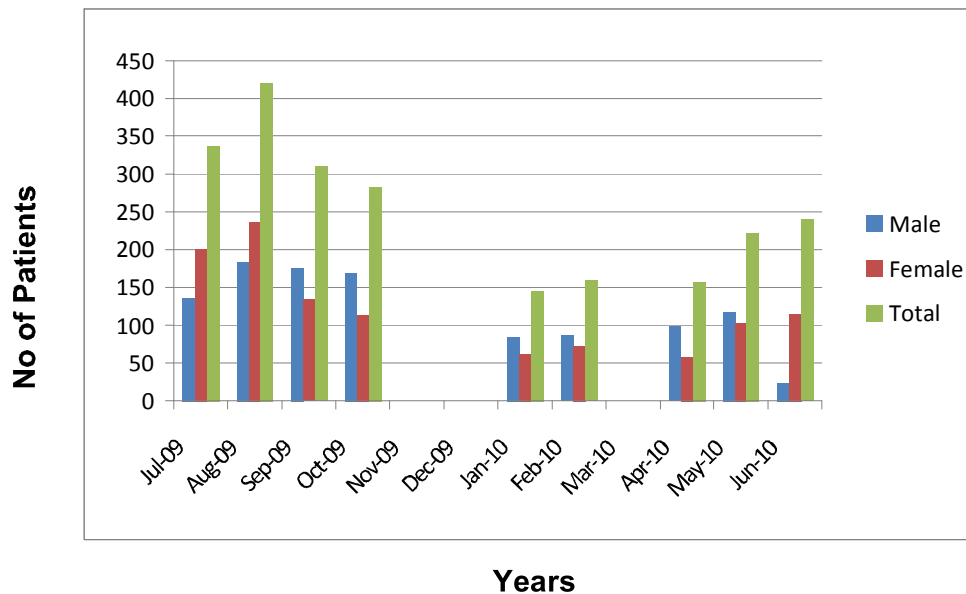
Summary Of Admission
1 July 2009 - 30 June 2010



Karachi Institute of Heart Diseases
Summary of X-Ray
July 2009 To June 2010

S.No	Month & Year	Male	Female	Total
1	Jul-09	136	201	337
2	Aug-09	184	237	421
3	Sep-09	176	134	310
4	Oct-09	169	114	283
5	Nov-09	0	0	0
6	Dec-09	0	0	0
7	Jan-10	84	62	146
8	Feb-10	87	73	160
9	Mar-10	0	0	0
10	Apr-10	99	58	157
11	May-10	118	104	222
12	Jun-10	24	116	240
Total		1077	1099	2276

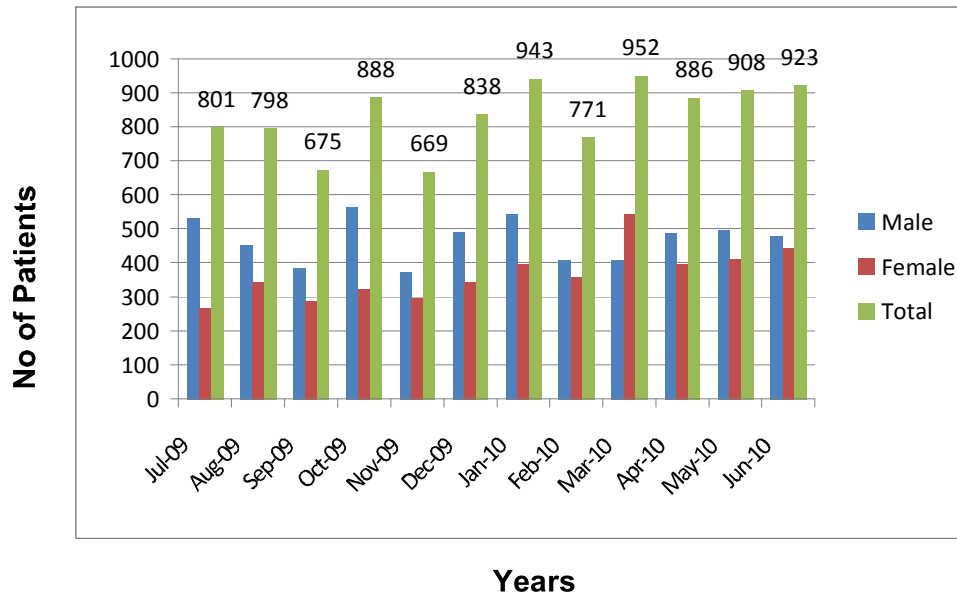
Summary Of X-Rays
1 July 2009 - 30 June 2010



Karachi Institute of Heart Diseases
Summary of Echo
July 2009 To June 2010

S.No	Month & Year	Male	Female	Total
1	Jul-09	532	269	801
2	Aug-09	455	343	798
3	Sep-09	386	289	675
4	Oct-09	564	324	888
5	Nov-09	373	296	669
6	Dec-09	492	346	838
7	Jan-10	545	398	943
8	Feb-10	410	361	771
9	Mar-10	409	543	952
10	Apr-10	489	398	886
11	May-10	497	411	908
12	Jun-10	479	444	923
Total		5631	4422	10052

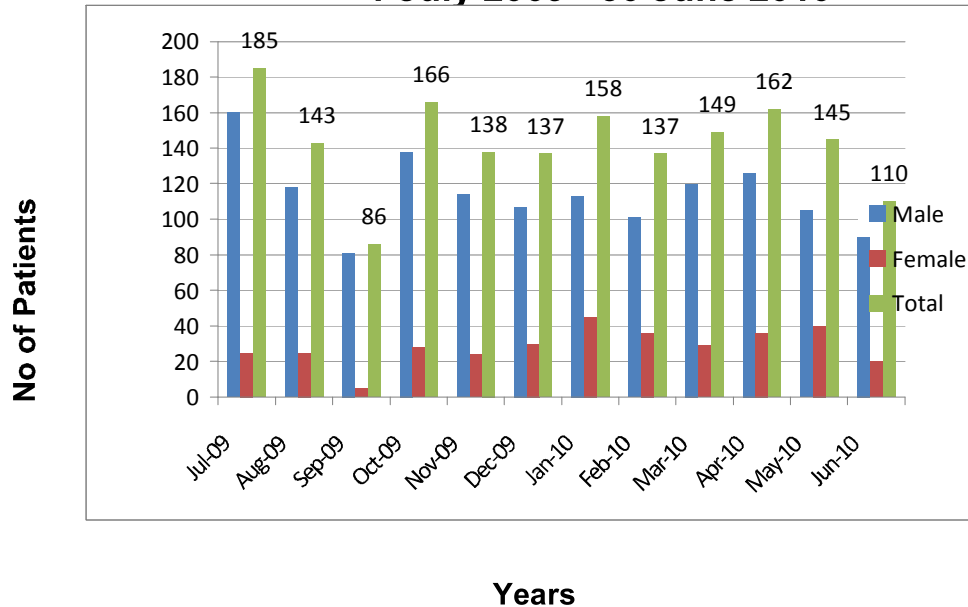
Summary Of ECHO
1 July 2009 - 30 June 2010



Karachi Institute of Heart Diseases
Summary of ETT
July 2009 To June 2010

S.No	Month & Year	Male	Female	Total
1	Jul-09	160	25	185
2	Aug-09	118	25	143
3	Sep-09	81	5	86
4	Oct-09	138	28	166
5	Nov-09	114	24	138
6	Dec-09	107	30	137
7	Jan-10	113	45	158
8	Feb-10	101	36	137
9	Mar-10	120	29	149
10	Apr-10	126	36	162
11	May-10	105	40	145
12	Jun-10	90	20	110
Total		1373	343	1716

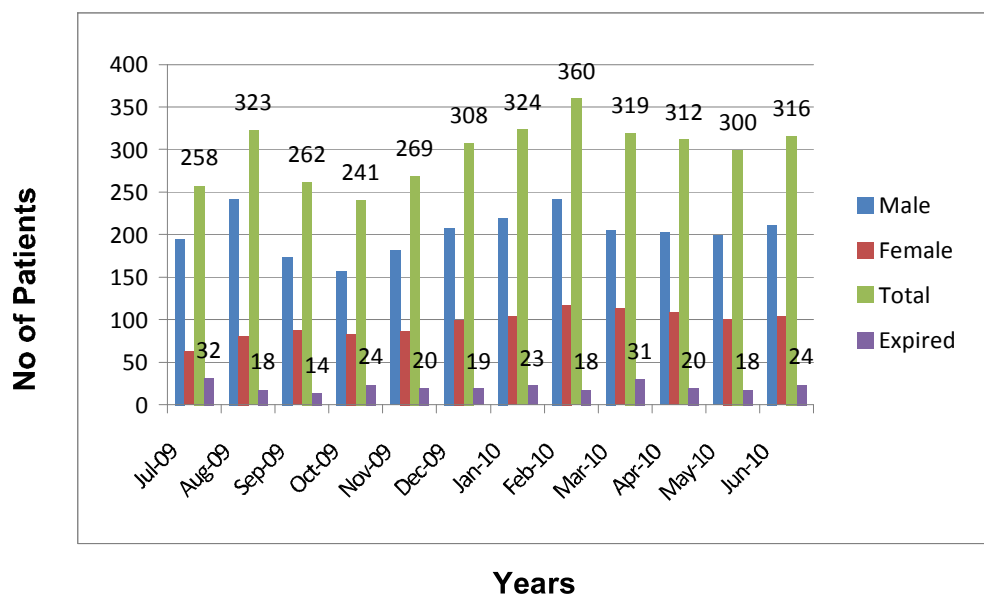
Summary Of ETT
1 July 2009 - 30 June 2010



Karachi Institute of Heart Diseases
Summary of CCU
July 2009 To June 2010

S.No	Month & Year	Male	Female	Total	Expired	Male	Female
1	Jul-09	195	63	258	32	21	11
2	Aug-09	242	81	323	18	11	7
3	Sep-09	174	88	262	14	8	6
4	Oct-09	158	83	241	24	11	13
5	Nov-09	182	87	269	20	11	9
6	Dec-09	208	100	308	19	16	3
7	Jan-10	220	104	324	23	13	10
8	Feb-10	242	118	360	18	11	7
9	Mar-10	206	113	319	31	16	15
10	Apr-10	203	109	312	20	11	9
11	May-10	199	101	300	18	10	8
12	Jun-10	212	104	316	24	17	7
Total		2441	1151	3592	261	156	105

Summary Of CCU
1 July 2009 - 30 June 2010



Karachi Institute of Heart Diseases
Summary of CCU
July 2009 To June 2010

S.No	Month & Year	Vent Patients	Male	Female	Vent Exp	Male	Female
1	Jul-09	12	5	7	7	2	5
2	Aug-09	13	8	5	2	1	1
3	Sep-09	8	3	5	1	0	1
4	Oct-09	21	5	16	9	1	8
5	Nov-09	18	10	8	8	3	5
6	Dec-09	24	18	6	13	11	2
7	Jan-10	23	8	15	7	3	4
8	Feb-10	26	12	14	10	3	6
9	Mar-10	33	19	14	12	9	4
10	Apr-10	18	12	6	8	3	5
11	May-10	21	9	12	12	3	9
12	Jun-10	16	11	5	5	4	1
Total		233	120	113	94	43	51

Summary Of CCU
1 July 2009 - 30 June 2010

